



SURVEILLANCE

101

GET TO KNOW OUR PRODUCTS



PRODUCT PRESENTATION

COAX AND IP

HD OVER COAX

HD over coax (HD-CVI) has been leading the video over coax industry. This technology has enabled customers to improve video monitoring quality over existing coaxial installations. This year HDCVI will offer:

HDCVI 6.0 PLUS

Leading the Over-Coax AI Evolution

 Real 5MP

 Super Adapt

 4K Real-time

 Enhanced AI

 AI Coding

 TiOC



HD OVER COAX

Product Overview

- 2MP
- 4MP
- 5MP
- 8MP

Penta Hybrid AI DVRs

- 4 Ch.+ 2 IP (1080p/4K)
- 8 Ch. + 4 IP (1080p/4K)
- 16 Ch. + 8 IP (1080p/4K)
- 32 Ch. / 16 IP (4K)



HD OVER COAX

Real 5MP



Real 5MP 16:9



Previous 5MP 4:3

Super Adapt



Without Super Adapt



With Super Adapt



HD OVER COAX



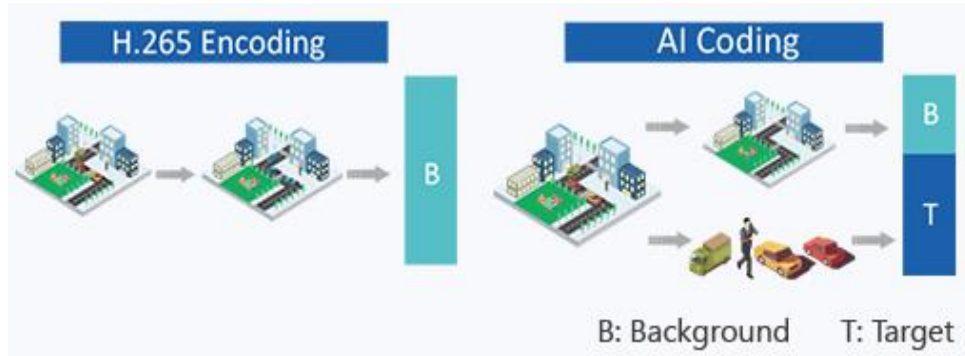
4K Real Time

Enhanced AI

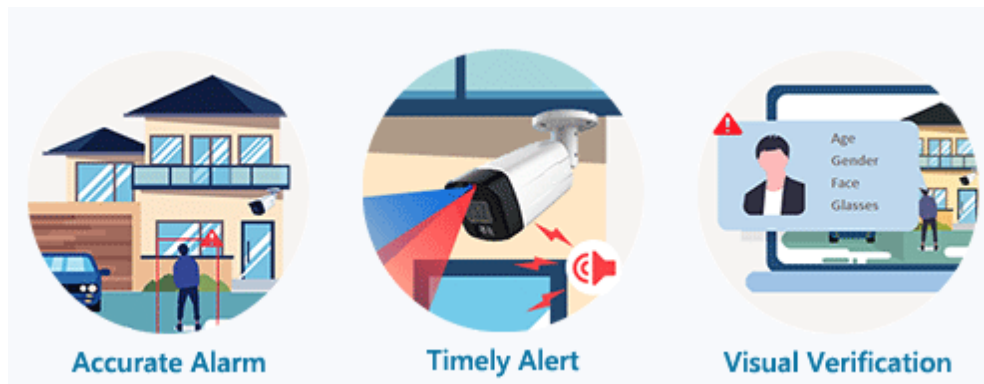


HD OVER COAX

AI Coding



Three in One



HD OVER COAX

Basic programing and web interface



IP

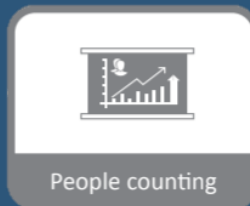
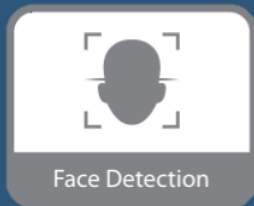
IP cameras are dominating the surveillance market. The IP camera sector is growing in both, features and sales, while cutting the distance in price with their Coax counterpart. IP cameras offer a great variety of options in resolution and features, including AI, deterrence, and 24/7 color.

5Mp



H.265+

Starlight



IP SYSTEMS

Product Overview

- 4MP
- 5MP
- 8MP
- Multi-Sensor

NVRs

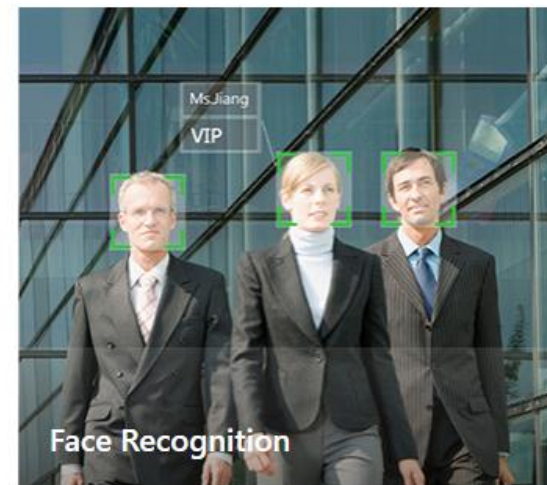
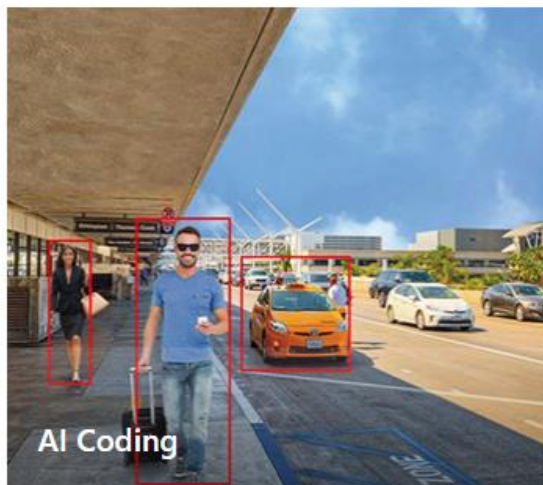
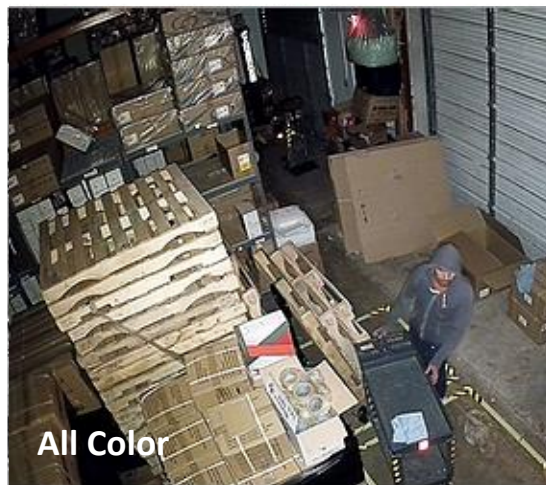
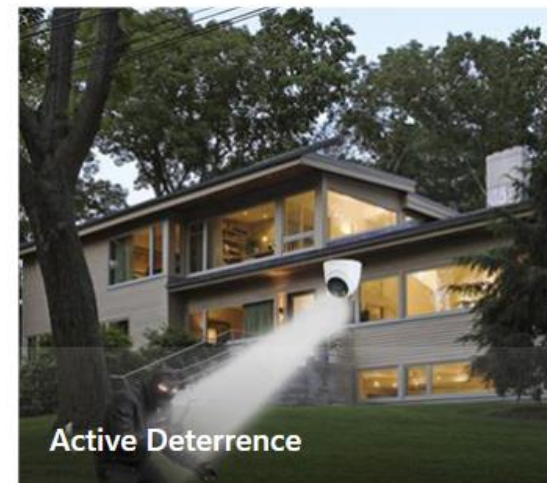
- 4 Ch
- 8 Ch
- 16 Ch/AI
- 24 Ch
- 32 Ch
- 64 Ch/AI



IP SYSTEMS

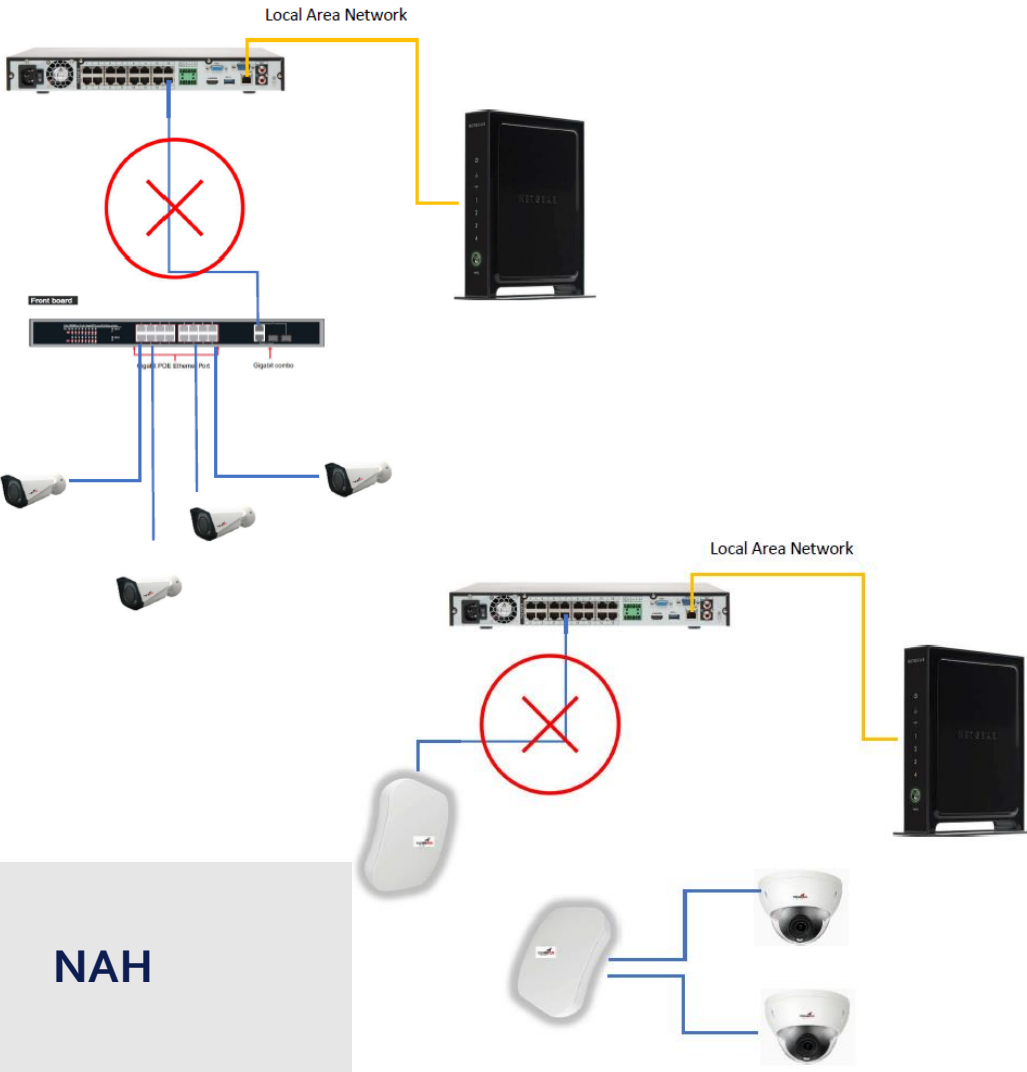
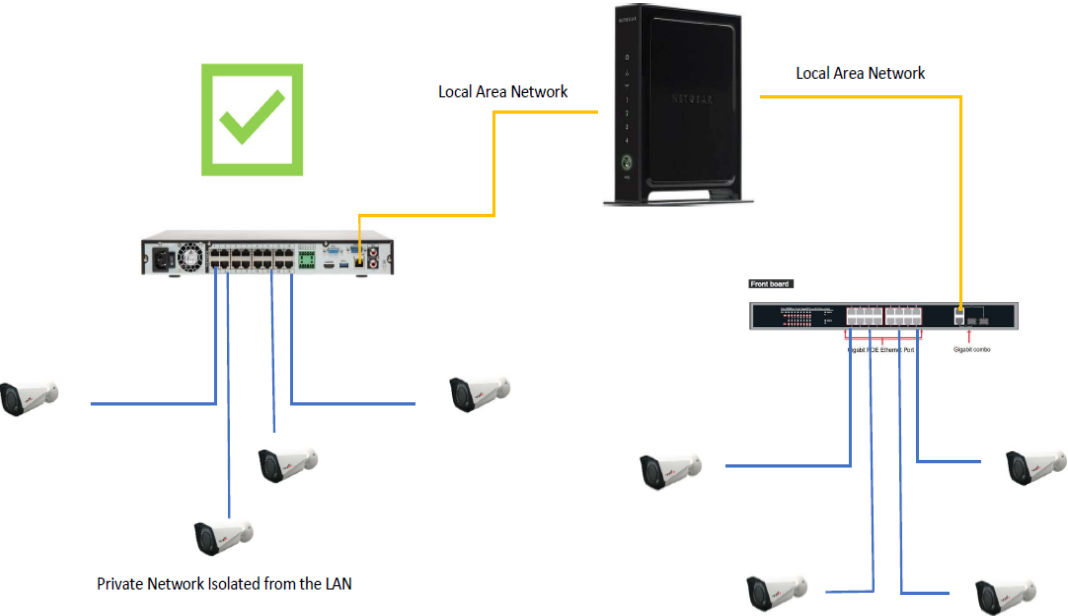
Features

- Smart Motion Detection
- Perimeter Protection
- Active Deterrence
- All Color
- AI Coding
- Face Recognition



CONNECTING IP CAMERAS

YEAH

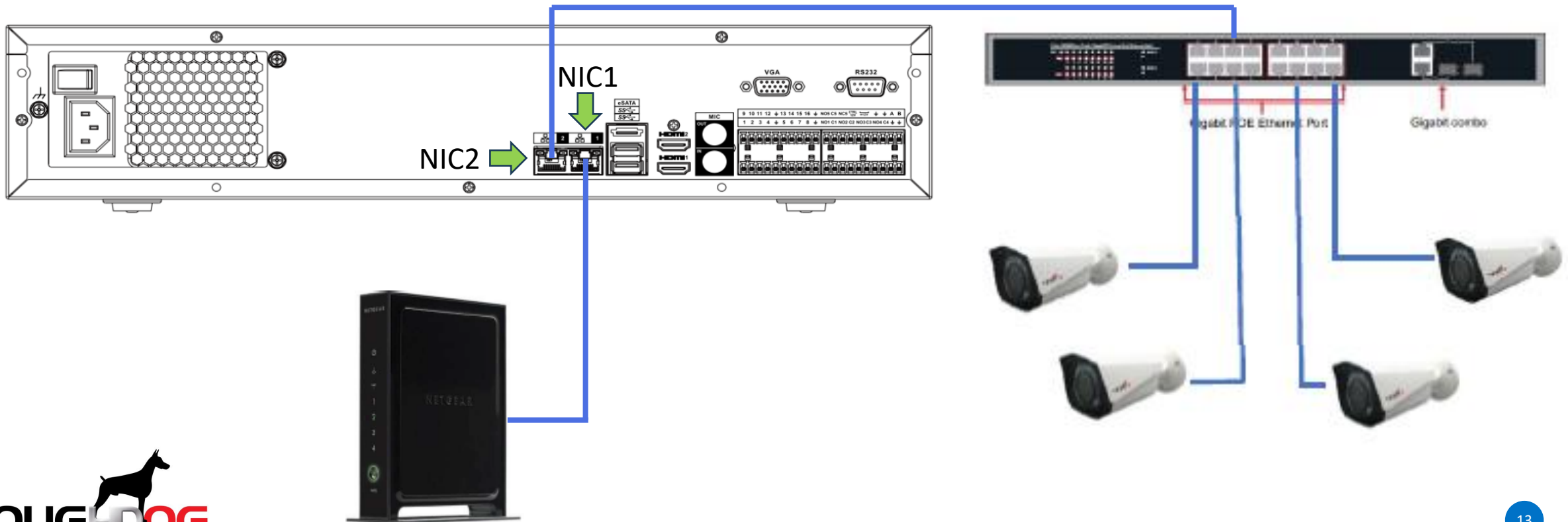


NAH



CONNECTING IP CAMERAS

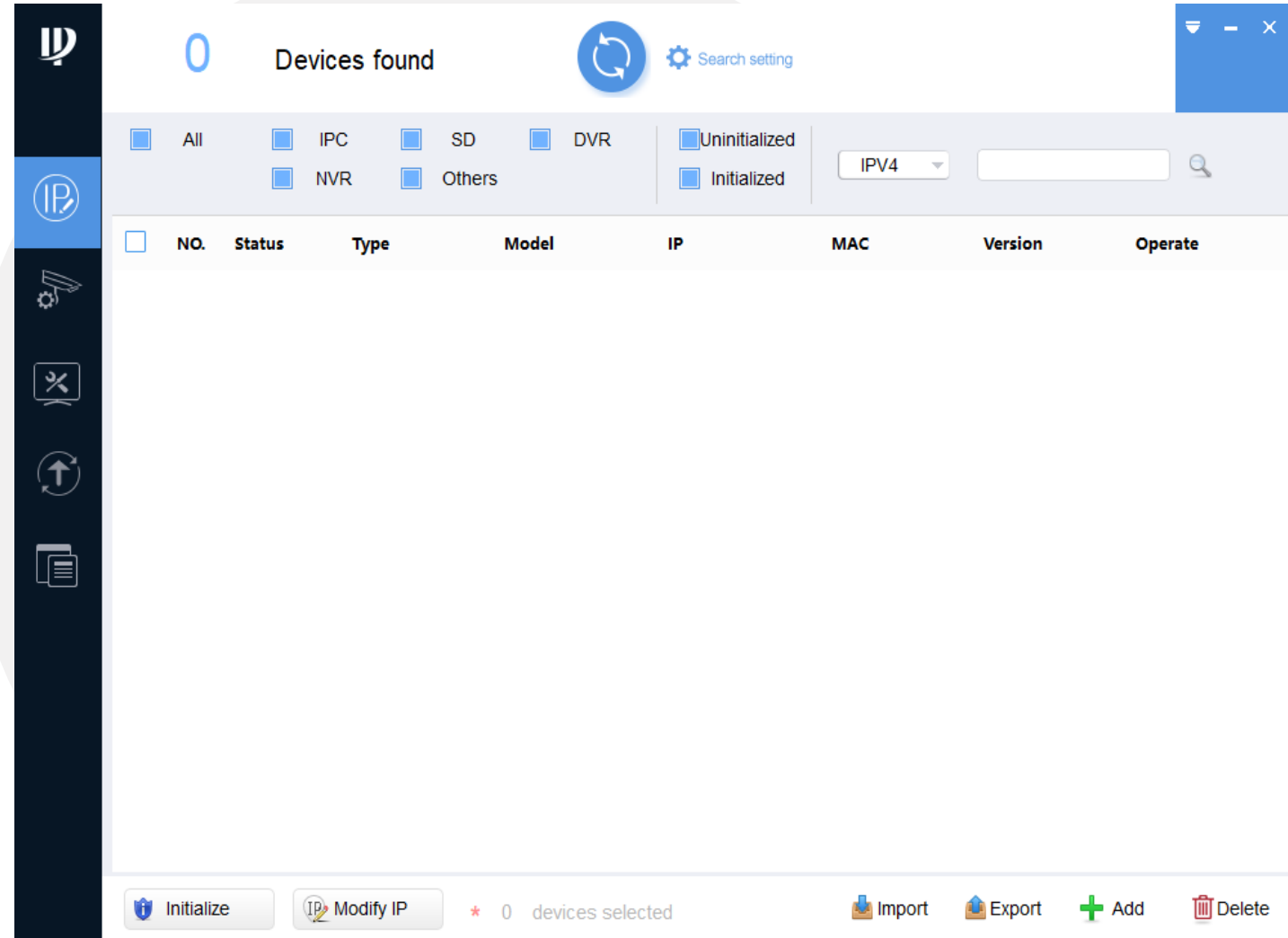
YEAH



CONNECTING IP CAMERAS

Things to consider when installing IP cameras

- Access to the LAN router (manually / IT)
- Have the **Config Tool** available
- Initialization
- Use the same password than the NVR
- Default IP will be 192.168.1.108
- One by one to avoid IP conflict (recommended)
- What IP addresses will you assign?
- NO DHCP

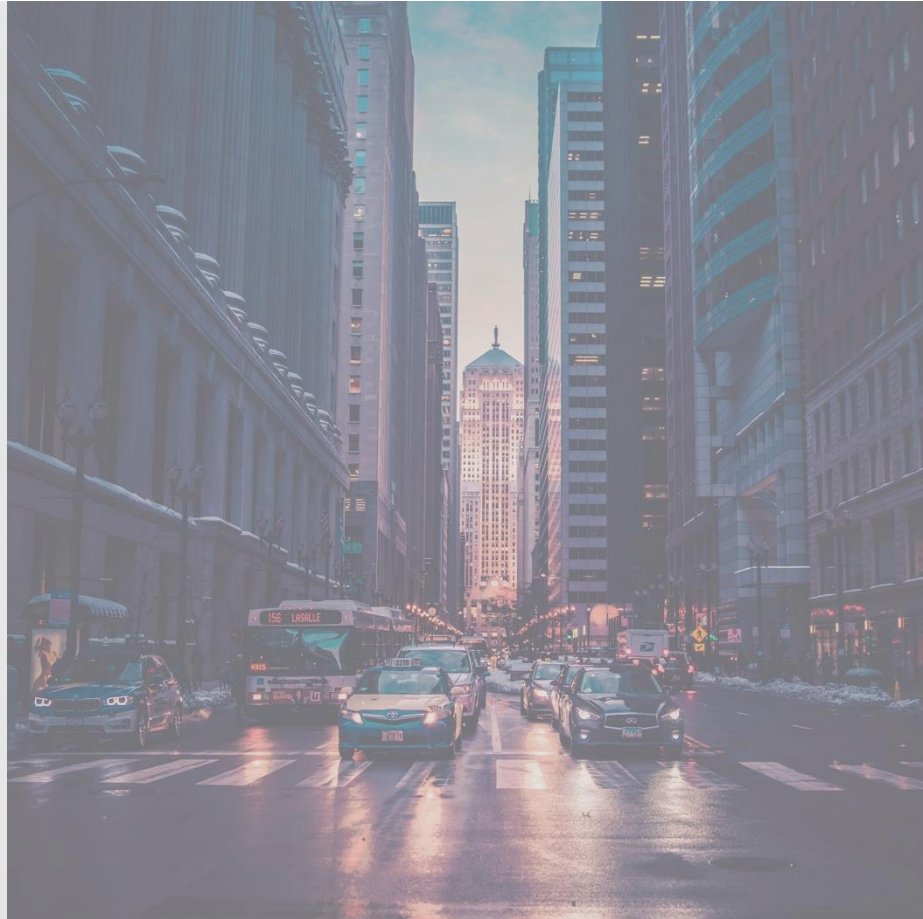


COMPARISON. COAX VS IP



COAX

- Easy to upgrade
 - Cost effective
 - SMD
- Long coax distance
- Real time transmission
- Power supply/ more cables



IP

- Easy to install/ Plug and play
 - Versatility
- Intelligence and analytics
 - SD Cards
- PoE, PoE+, PoE extenders
 - All in one
- Multiple sensors
 - Learning curve



THANK YOU.

SALES@TDSECURITYSYSTEMS.COM

WWW.TDSECURITYSYSTEMS.COM